

1、Application or Notice:

The LED power board is designed for the backlight of the LCD panel with LED backlight, it's used in the LED TV Set or Monitor.

1.1、1.1、Applicable load: From 15.6 inch to 26 inch LED Panel..

1.2、Notice:

1.2.1、For safety issue: Please keep 1.0mm at least from the metal parts of the system to the LED power board or put a piece of insulator between the LED power board and the metal parts to avoid the situation of high failure or arcing(ETC)

1.2.2、Don't twist, deform, drop or knock the inverter during assembly.

1.2.3、the LED power board is usually designed without the case. Please take care about ESD at anytime.

1.2.4、Due to the characteristic of panels, the brightness is sensitive about temperature, you must measure it in the same condition and be waiting for 5 to 15 minutes after the power on.

2、Environment characteristics

2.1、Temperature:

Storage: $-20^{\circ}\text{C} \sim +60^{\circ}\text{C}$.

Operating: $0^{\circ}\text{C} \sim 50^{\circ}\text{C}$.

2.2、Humidity:

Storage: 5%~95%RH, non-condensing

Operating: 10%~95%RH, non-condensing

3、

3.1、input voltage: From 12V to 24V

3.2、over voltage protection

3.3、Soft start or soft on/off control;

3.4、Constant operating frequency.、

3.5、PWM dimming

3.6、High reliability, simple construction and easy assembly.

4、General characteristics:

4.1、Input characteristics

Parameter	Symbol	Min	Typ	Max	Unit	Remark
Input voltage	V_{in}		12		V	Reference the list of input voltage and the number of LED in series.
Input current	I_{in}	0		2	A	

DESCRIPTION:

(规格书)

SPECIFICATION

Model

LED-14B01 V1.0

Document

LED-14B01 V1.0

REV:

A

Input power	Pin	-	18	-	W	
Input enable voltage	EN	2.0		5.0	V	Enable
				1.5	V	Disable
Input dimming voltage	PWM		200			Max:20KHZ Min :200HZ

4.2 · Output characteristics

Parameter	Symbol	Min	Typ	Max	Unit	Remark
led current(Max Br)	IL	300		380	mA	
led current(Min Br)	IL	0			mA	
led voltage	VL	vcc		45	V	
Frequency	Pin		330		KHz	
Open voltage	LED+		-	VCC	V	

4.3 · PIN Assignments

4.3.1 · DC Input(CN1)

Table 1 Pin-CN1 Connection And Function

Pin NO	Symbol	Description
1、2	VIN	Power Supply
5、6	GND	Power Ground
3	EN	Enable Control
4	PWM	Dimming Control

Note: CN1 -- XH CONNECTION, TYPE : pitch2.0mm

4.3.2 · LED Output(CN5 1-10,CN10 1-10,CN2 1-12,CN7 1-12)

Table 2 Pin- CN5 1-10,CN10 1-10,CN2 1-12,CN7 1-12 Connection And Function

10PIN	12PIN	Symbol	Description
	1	LED-	Led feedback side
1	2	LED-	Led feedback side
2	3	LED-	Led feedback side
3	4	LED-	Led feedback side
4	5	NC	NC
5	6	LED+	Led input side
6	7	LED+	Led input side
7	8	NC	NC
8	9	LED-	Led feedback side
9	10	LED-	Led feedback side
10	11	LED-	Led feedback side
	12	LED-	Led feedback side

Note: CN5 1-10,CN10 1-10,CN2 1-12,CN7 1-12 -- XH CONNECTION, TYPE : pitch0.5mm

				DESCRIPTION: (规格书) SPECIFICATION	
				Model LED-14B01 V1.0	
DATE	PREPARED	CHECKED	APPROVED	Document	
2010-07-08				LED-14B01 V1.0	A REV:

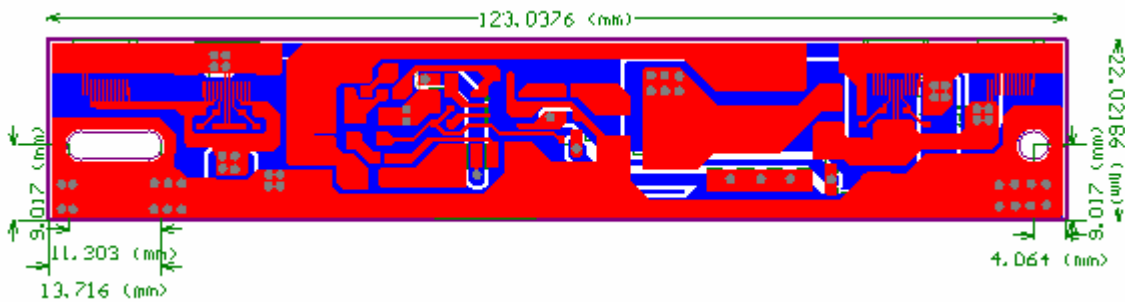
4.3.2、LED Output(CN3 1-10,CN6 1-12,CN8 1-10,CN11 1-12)

Table 3 Pin- CN3 1-10,CN6 1-12,CN8 1-10,CN11 1-12 Connection And Function

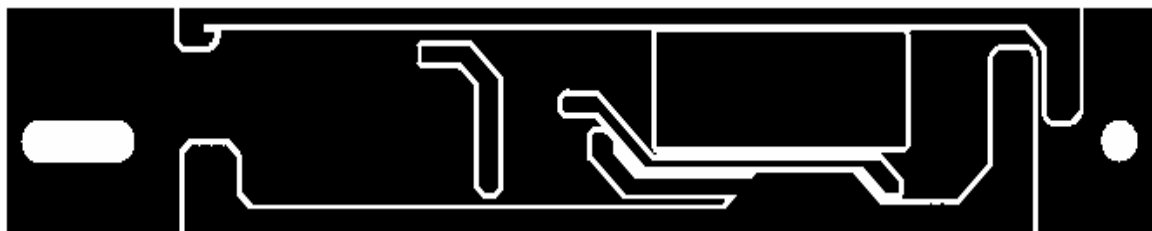
10PIN	12PIN	Symbol	Description
1	1	LED+	Led input side
2	2	LED+	Led input side
3	3	LED-	Led feedback side
4	4	LED-	Led feedback side
5	5	LED-	Led feedback side
6	6	LED-	Led feedback side
7	7	LED-	Led feedback side
8	8	LED-	Led feedback side
9	9	LED-	Led feedback side
10	10	LED-	Led feedback side
	11	LED-	Led feedback side
	12	LED-	Led feedback side

Note: CN3 1-10,CN6 1-12,CN8 1-10,CN11 1-12 -- XH CONNEETION, TYPE : pitch0.5mm

5.1、Toplayer (UNIT : mm)



5.2、Bottomlayer



Note:We advised it better the dimensions of the fixed poles is 90mm.

				DESCRIPTION: (规格书)	
				SPECIFICATION	
				Model	LED-14B01 V1.0
DATE	PREPARED	CHECKED	APPROVED	Document	LED-14B01 V1.0
2010-07-08			5 OF 5		REV: A